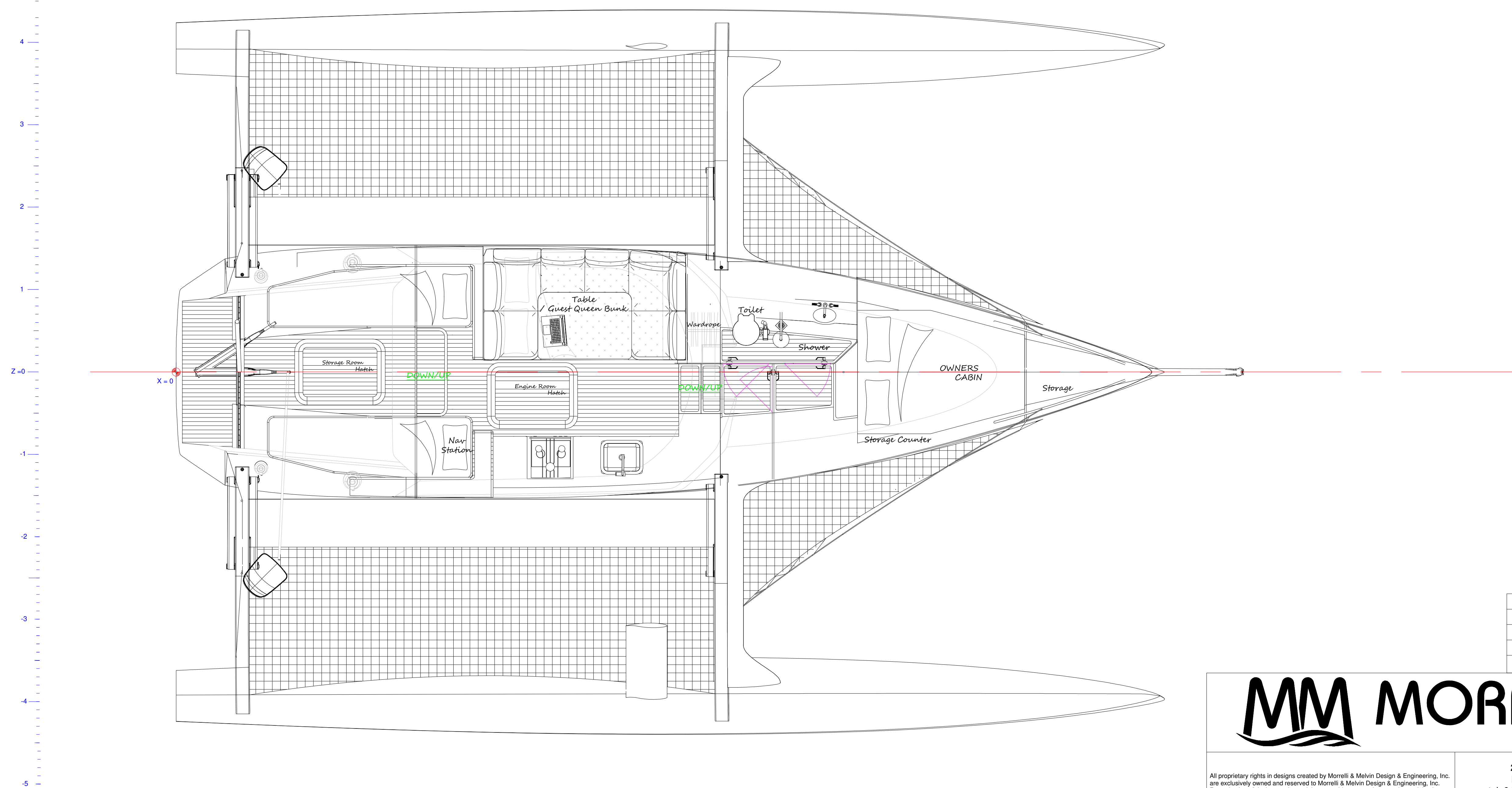
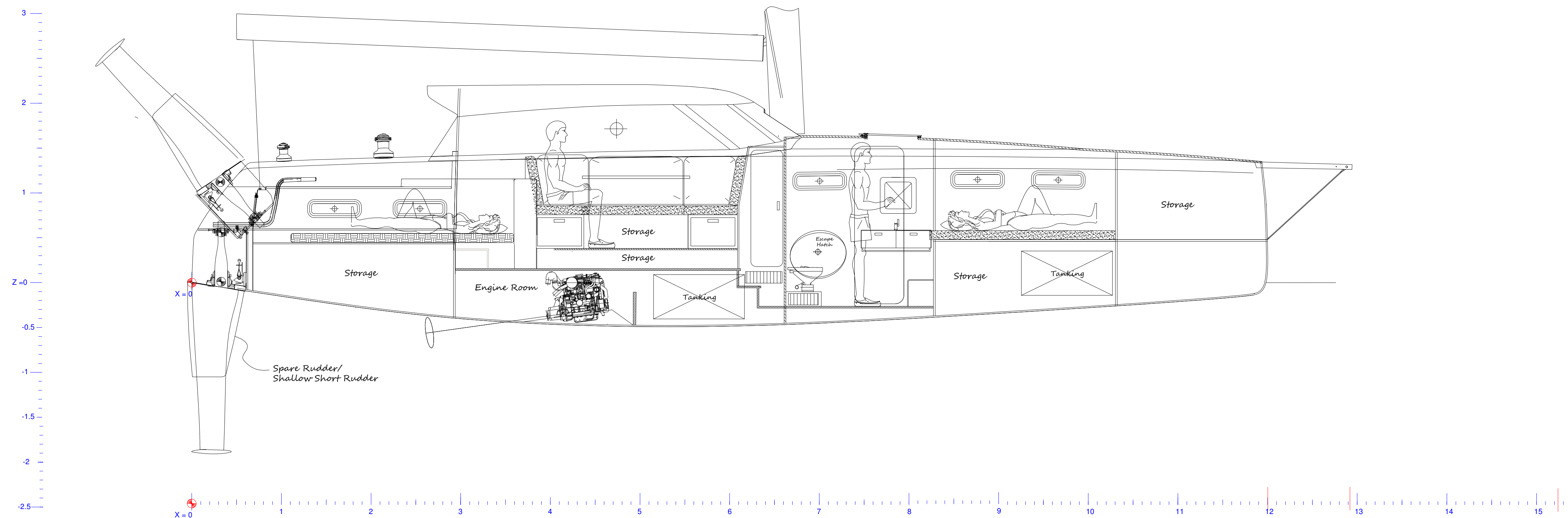


RAPIDO 40 TRIMARAN



REV:	DATE:	BY:	CHECKED:	DESCRIPTION:
A		FvV	PM	FIRST ISSUE
B				
C				
D				



MM MORRELLI & MELVIN
DESIGN & ENGINEERING INC

All proprietary rights in designs created by Morrelli & Melvin Design & Engineering, Inc. are exclusively owned and reserved to Morrelli & Melvin Design & Engineering, Inc. Reproduction of designs and copyright ownership or any other proprietary rights in designs or any deviation, adoption or variation thereof are prohibited without written consent by Morrelli & Melvin Design & Engineering, Inc.

201 Shipyard Way, Suite B
Newport Beach, CA 92663
tel: 949.612.8087 fax: 949.612.7583
www.morrellimelvin.com
info@morrellimelvin.com

VESSEL NAME:	RAPIDO 40				
DRAWING TITLE:	GENERAL ARRANGEMENT				
DWG NUMBER:					
DRAWN BY:	EvanWest	SCALE:	NTS	DATE:	4/18/2019
CHECKED BY:		REV:	P3	PAGE:	